

Maintenance Instructions for the **TRIMMASTER** flexible cable

Safety Alert: Read the following instructions completely before working with a cable. Keep the Cable Guard (213) in place over the motor coupling at all times. If your new machine is three-phase, check the rotation of the motor. If the rotation is wrong, it will snap the inner core. The proper rotation is marked on the motor.

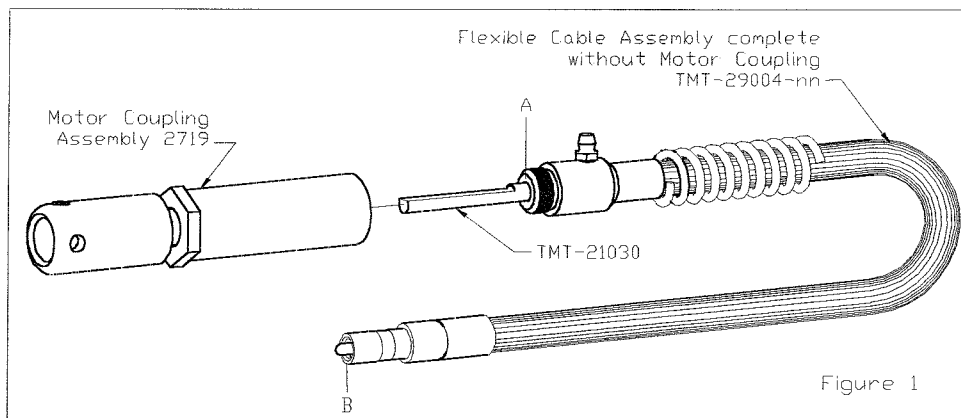
NOTE: "nn" at the end of assembly numbers indicates the nominal cable length in inches.

Lubrication:

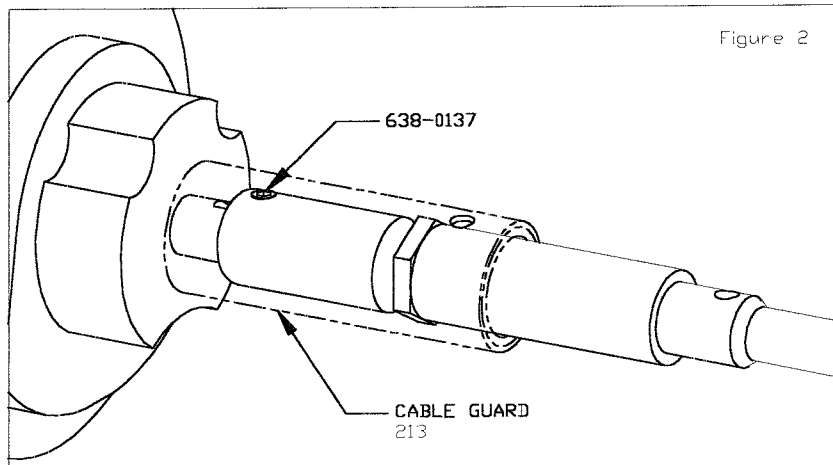
- Every three weeks, put two pumps of grease from a grease gun into grease fitting (330-0048) on the Adapter Coupling (TMT-21031).
- Do not lubricate the ball bearings in the motor coupling. These are sealed bearings that need no lubrication.
- Avoid kinking or bumping the cable. This could break the cable. Keep the Strain Relief (TMT-21154) in place to help protect the cable.

To replace the cable (3317-nn), using your own motor coupling:

- Remove the cable from the clipper by loosening the set screw (638-0008) at the base of the clipper. Unscrew the Clipper Connection (TMT-21033) from the Casing Coupling (TMT-21032). Remove the old cable from the motor coupling.
- When ordering a new cable, specify the length you require, and include it in the part number, i.e. TMT-29004-nn. To determine what cable length you need, measure from the Adapter Coupling, point A, to the Clipper Connection, point B. You may also find the cable length stamped on the coupling insert (TMT-21030). See Figure 1.



- Standard cable lengths are 6", 20", 23", 36", 40", 42", 48", 54", 60", 66", 72", and 96". All cables are made to order, and any length requested can be provided. Usually, cables are not over 96" in length.
- Put the Cable Guard (213) on the new cable before attaching the cable to the motor coupling and the clipper.
- Slide the motor coupling over the motor shaft, making certain that the dog point screw (638-0137) enters the motor shaft keyway. After the coupling has been pushed all the way onto the motor shaft, tighten the dog point screw (638-0137) with a 1/4" Allen wrench. Slide the guard into place over the motor coupling and tighten the set screw. See Figure 2.



To replace the core assembly (3319-nn):

- Remove the cable from the clipper by loosening the set screw at the base of the clipper. Remove the other end of the cable from the motor by first loosening the set screw on the guard, so that you can loosen the dog point set screw in the motor coupling. Unscrew the Clipper Connection (TMT-21033) from the Casing Coupling (TMT-21032). Pull out the entire length of the inner core. Wash the empty casing thoroughly in naphtha or any other grease solvent.
- To prepare the new core, hold a ball of grease the size of a quarter in one hand and pull the entire length of the inner core through it.
- Thread the new inner core into the outer casing, inserting the flat-key end (TMT-21030) first. NOTE: if the core does not go in all the way, turn the core until the Coupling Insert (TMT-21030) is seated.
- To replace the cable in the clipper, be sure that the Clipper Connection (TMT-21033) is inserted in the clipper until its shoulder is against the clipper. If the cable will not enter the clipper all the way, turn the motor coupling spindle (TMT-21036) by hand until the cable can enter the clipper freely. The drive key (TMT-21029) has to fit into the Clipper Crankshaft (TMT-21134).
- Tighten the set screw (638-0008) on the clipper.

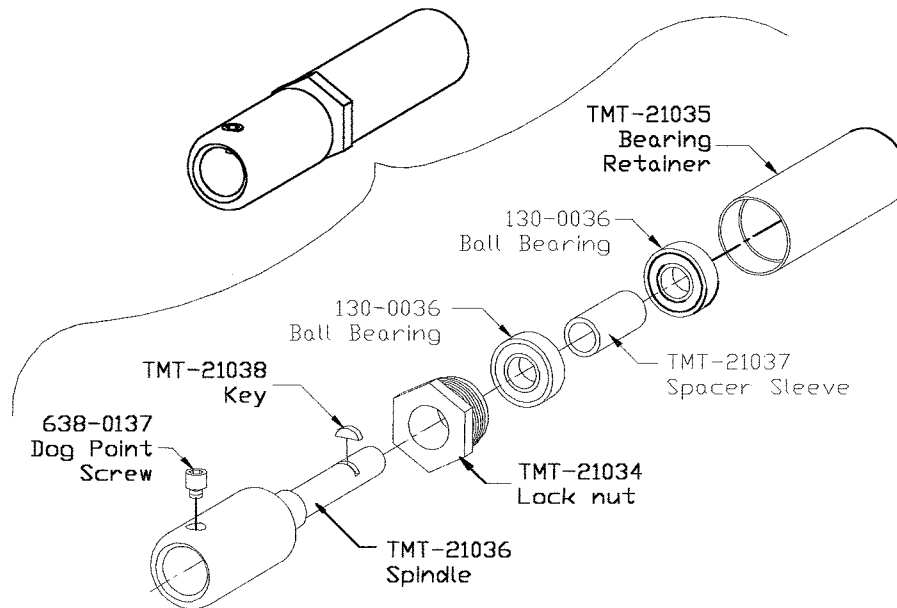
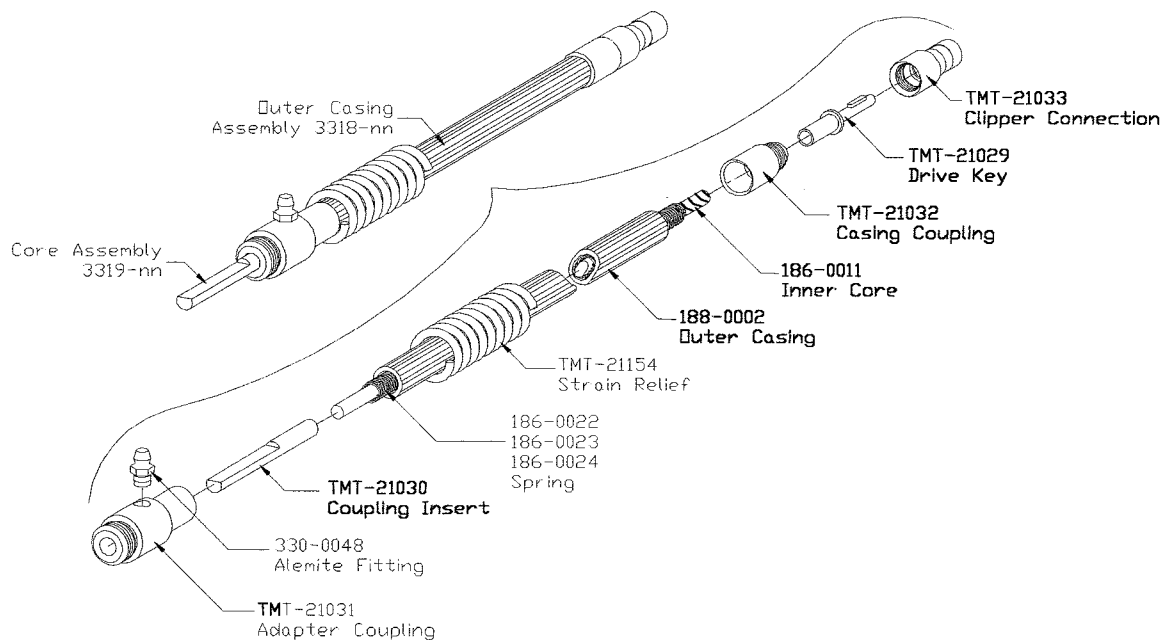
To replace the outer casing assembly (3318-nn):

- Remove the cable from the clipper by loosening the set screw (638-0008) at the base of the clipper. Remove the other end of the cable from the motor by first loosening the set screw on the guard, so that you can loosen the dog point set screw in the motor coupling. Unscrew the Clipper Connection (TMT-21033) from the Casing Coupling (TMT-21032). Pull out the entire length of the inner core.
Note: if you wish to remove the Cable Guard so it will be out of your way, you will first have to remove the grease fitting (330-0048) on the motor coupling.
- Grease the old core, as you insert it in the new outer casing, inserting the flat-key end (TMT-21030) first. NOTE: if the core does not go in all the way, turn the core until the Coupling Insert (TMT-21030) is seated.
- To replace the cable in the clipper, be sure that the Clipper Connection (TMT-21033) is inserted in the clipper until its shoulder is against the clipper. If the cable will not enter the clipper all the way, turn the motor coupling spindle (TMT-21036) by hand until the cable can enter the clipper freely. The drive key (TMT-21029) has to fit into the Clipper Crankshaft (TMT-21134).
- Tighten the set screw (638-0008) on the clipper.

Part numbers for cable assemblies:

| | |
|--------------|---------------------------------|
| 2719 | Motor Coupling |
| 3319-nn | Core with ends |
| 3318-nn | Casing with ends |
| 3317-nn | Cable Assembly without coupling |
| TMT-29004-nn | Complete Cable Assembly |

NOTE: "nn" at the end of assembly numbers indicates cable length in inches. Please indicate the cable length you need when placing an order. At least one day is needed to fill a cable order, because all cables are custom made to length according to order.

Motor Coupling Assembly 2719:**Flexible Cable Assembly TMT-29004-nn (includes motor coupling):**

TRIMMASTER
4860 North Fifth Street Highway
Temple, Pennsylvania 19560 USA

Telephone: 610- 921-0203
Fax: 610- 929-8833
E-Mail: trim@trimmaster.com
Web site: www.trimmaster.com